

## Intacct Insight™

Intacct Insight™ is a set of powerful tools for real-time business intelligence, management and control. Allow users to create and share dashboards that contain real-time interactive charts and reports, financial and operational analytics, Web 2.0 mashups and performance management capabilities. Intacct Insight also empowers employees with real time, actionable and tailored financial and operational information, so they can make better decisions and drive business performance.

### Financial Visibility and Business Intelligence

Users can create dashboards using any report or graph from any application, for both financial management and operational reporting. Live reports reflect the real-time performance of

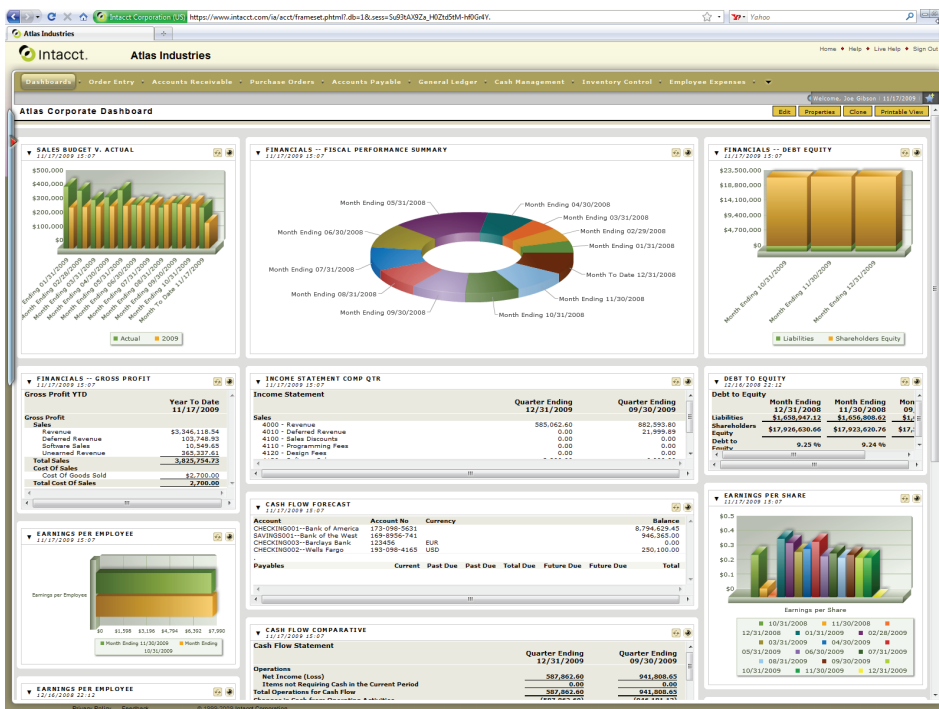
the company, and support drill-down capabilities that allow you to dig into the data at any level you need (even down to attached supporting documents, for example scanned signature documents) to greatly simplify research and audits. In addition to reports, you can bring

data from any Intacct application onto the dashboard, including customers, vendors, items, invoices and bills. Your dashboard is your central business desktop containing all your most important data, in real time. Intacct Insight allows you to drill down to the details behind each activity, enforcing the proper permissions and controls along the way.

Each dashboard contains only the information each executive or employee needs or wants to review, with the details behind the reports just a click away. A sales manager can view active opportunities from Salesforce CRM alongside bookings by sales rep and payments by customer from Intacct. An accounting manager in accounts payable can see relevant payment information and bills to approve, and can filter the data for a range of vendor names.

You can customize dashboards with your favorite colors and you can share dashboards with other users that answer the questions they ask in the way that they want to see the answer. Users can copy or clone a dashboard and personalize it without changing the dashboard they started from.

Your dashboards can be private or public, shared or deeply customized. By creating the right windows into the company's operation for each executive and for each employee, the finance



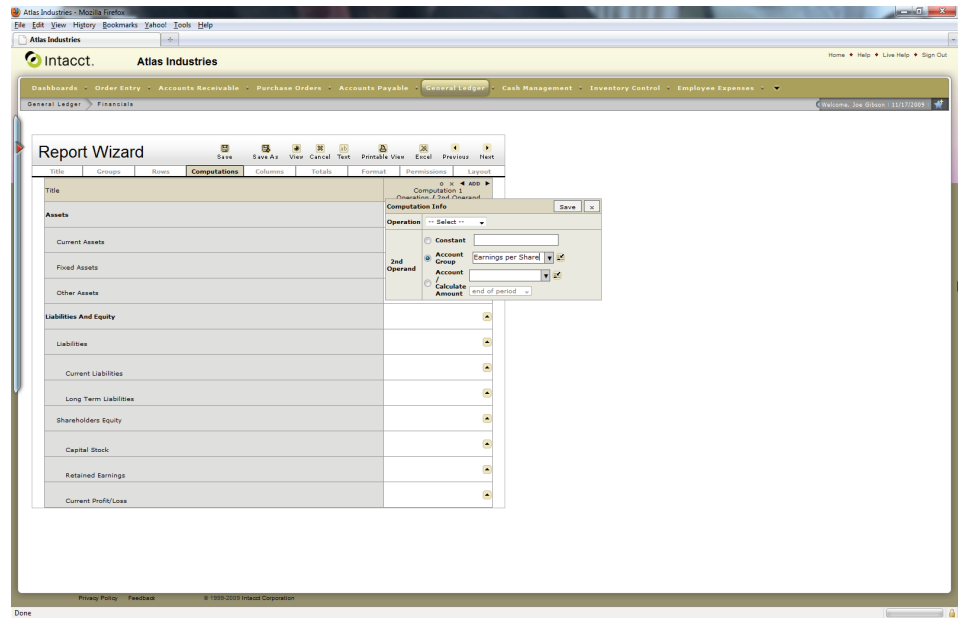
Intacct Insight provides unlimited dashboards for financial and operational reporting.

department can focus on getting today's work done rather than answering questions about yesterday's reports — giving each user the power to drill down and research the questions they have, from their desktop. Each user can create the dashboard or dashboards that they want to work from, without requiring help from a system administrator or power user.

### Global Control, Local Autonomy

Intacct validates user permissions and access to individual components on the dashboard according to your security permission definitions, at a very granular level. Intacct Insight allows you to give access at a summary level while still preventing users from accessing detailed information that they should not see.

Power users can also create dashboards for other employees and limit those employees' ability to modify data by granting read-only permissions.



Intacct Insight lets you perform spreadsheet-like calculations and cross-tabs directly in reports.

### Built-in Performance Management

Deep financial and operational reports enable you to manage the business, not just track your finances. Intacct Insight includes built-in performance management capabilities that make it easy to define and publish key performance indicators across the

business. Users can create reports that support non-financial data such as rooms per hotel or tables per restaurant, allowing real-time operational reporting of room occupancy or tabletop management. You can report on earnings per share, or revenue per employee — the numbers you really need to manage your business, not just the numbers available from your financial system. You can easily calculate performance against plan, benchmarks, other divisions, locations or any other business characteristics.

	Quarter Ending 12/31/2009	Quarter Ending 09/30/2009
<b>Assets</b>		
<b>Current Assets</b>		
1000 - Cash in Bank	8,794,629.45	8,794,629.45
1005 - Cash in Bank - Euro	0.00	0.00
1010 - Petty Cash	250,100.00	250,100.00
1015 - Undeposited Funds	0.00	0.00
1020 - Savings	946,365.00	946,365.00
1100 - Accounts Receivable	8,669,082.56	8,081,219.96
1125 - Allowance For Doubtful Accounts	45,821.12	45,821.12
1150 - Employee Advances	170.00	170.00
1200 - Inventory	75,392.21	75,392.21
1300 - Prepaid Expenses	622,955.00	622,955.00
<b>Total Current Assets</b>	<b>19,404,425.34</b>	<b>18,816,602.74</b>
<b>Fixed Assets</b>		
1500 - Equipment	1,327,815.00	1,327,815.00
1510 - Building	1,666,110.00	1,666,110.00
1520 - Furniture & Fixtures	144,100.00	144,100.00
1530 - Leasehold Improvements	1,180,470.00	1,189,470.00
1600 - Accum. Depreciation- Equipment	(12,815.00)	(12,815.00)
1610 - Accum. Depreciation- Building	(8,510.00)	(8,510.00)
1620 - Accum. Depreciation- Furniture & Fixtures	(12,660.00)	(12,660.00)
1630 - Accum. Depreciation- Leasehold Improvements	(125,645.00)	(125,645.00)
1640 - Accumulated Amortization	(125,610.00)	(125,610.00)
<b>Total Fixed Assets</b>	<b>4,042,355.00</b>	<b>4,042,355.00</b>
<b>Other Assets</b>	0.00	0.00
<b>Total Other Assets</b>	<b>0.00</b>	<b>0.00</b>
<b>Total Assets</b>	<b>23,446,820.34</b>	<b>22,858,957.74</b>
<b>Liabilities And Equity</b>		
<b>Liabilities</b>		
<b>Current Liabilities</b>		
2000 - Accounts Payable	169,225.50	169,225.50
2005 - Sales Tax Payable	12,454.65	12,454.65
2010 - Accrued Expense	10,605.00	10,605.00
2020 - Accrued Compensation	1,000,000.00	1,000,000.00
<b>Total Current Liabilities</b>	<b>1,192,285.15</b>	<b>1,192,285.15</b>
<b>Long Term Liabilities</b>		
2500 - Note Payable	500,000.00	500,000.00
<b>Total Long Term Liabilities</b>	<b>500,000.00</b>	<b>500,000.00</b>
<b>Total Liabilities</b>	<b>1,692,285.15</b>	<b>1,692,285.15</b>
<b>Shareholders Equity</b>		
3000 - Capital Stock	5,000,000.00	5,000,000.00
3010 - Paid-In-Capital	6,190,725.00	6,190,725.00
<b>Total Capital Stock</b>	<b>11,190,725.00</b>	<b>11,190,725.00</b>
<b>Retained Earnings</b>		
3100 - Retained Earnings	9,975,947.59	9,034,138.94
<b>Total Retained Earnings</b>	<b>9,975,947.59</b>	<b>9,034,138.94</b>
<b>Current Profit/Loss</b>	<b>587,892.60</b>	<b>941,808.65</b>
<b>Total Shareholders Equity</b>	<b>21,745,535.19</b>	<b>21,166,972.59</b>
<b>Total Liabilities And Equity</b>	<b>23,446,820.34</b>	<b>22,858,957.74</b>

Powerful reporting capabilities let you pull data from any module in the format you need.

### Stay Up-to-Date

Intacct Insight lets you directly access workflow events awaiting your action, such as expense reports you need to approve. You can track significant events that need attention, such as POs exceeding preset limits or invoices that are due. Users can easily customize and personalize the rules that trigger alerts. You can keep up with real-time data analysis and stay up-to-date with the latest information from all sides of

your organization. For example, you can view the top ten invoices listing customers and the amount due, the top twenty expense reports showing which employees have incurred expenses, the top five bills and which vendors are costing you the most money.

### Extend the Value of Your Information

With Intacct Insight, you can include financial data from Intacct alongside information from other web services, including popular consumer services like Yahoo! Weather or Google News or business applications like Salesforce CRM or ADP. Customizable links can fetch and display data from other applications and processes, such as updates on FedEx shipments. You can organize the relevant data sources to manage and analyze your

“The Intacct financial management solution and its Web-based delivery model have significantly reduced our costs compared to maintaining an in-house accounting system.”

– Vice President of Finance, Voltage Security

operations and performance all on a single dashboard. For example, an ice cream company might include information from weather.com to project how forecasted temperatures are likely to affect daily sales.

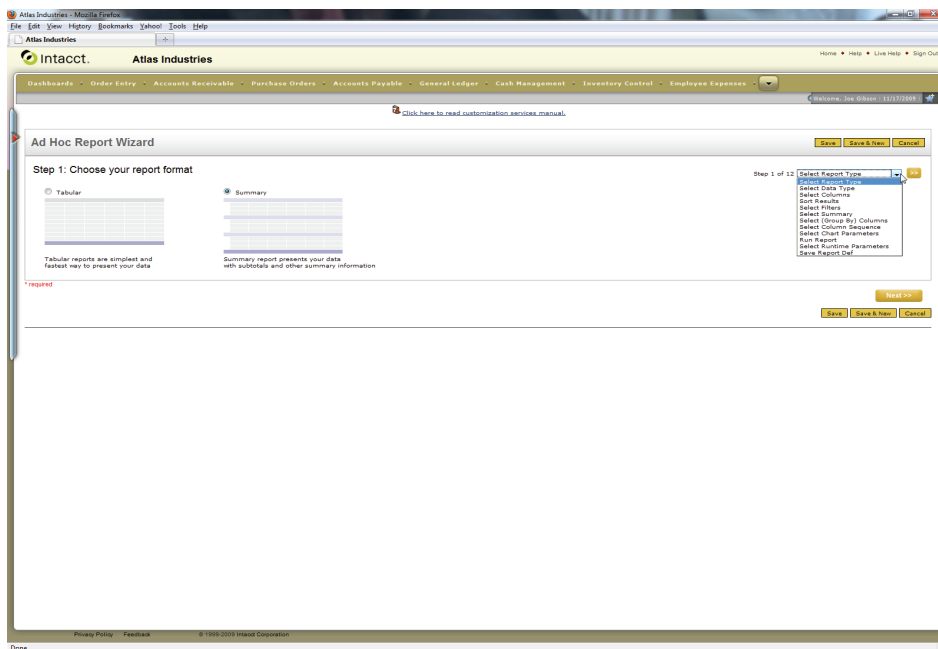
### See Your Data the Way You Want

Intacct Insight provides sophisticated and easy-to-use reporting capabilities across all Intacct applications. Users can view all the information they need to do their jobs, without writing any code or learning any new reporting or business intelligence tools. Customizable data views let you choose the fields to display

or export, and filter and sort just the data you want. You can name and share data views with others, and users can customize the views to create their own displays and reports.

### Flexible Ad-Hoc Reporting

Intacct Insight lets you export data from custom views to a text file or spreadsheet, giving every user the power of a simple ad-hoc data reporting tool with the simplicity of a configurable data wizard. Users who need more powerful reporting capabilities can leverage Intacct’s ad-hoc reporting tool to generate financial reports against different time periods (e.g. year-over-year, quarter-over quarter).



All reporting is wizard-based — no programming required.

### Intacct. A Better Way to Run Your Business.

Superior financial applications. Real-time business visibility. An open, on-demand platform. Easy administration and configuration without programming. You can have all these things and the highest rate of customer success and satisfaction and the lowest total cost of ownership. Contact us to learn how Intacct can help you run your business, in the Cloud.

